

**STANDARD DEPARTURE CHART**  
**INSTRUMENT (SID) - ICAO**  
**CAT A B C**

AERODROME ELEV 174 FT

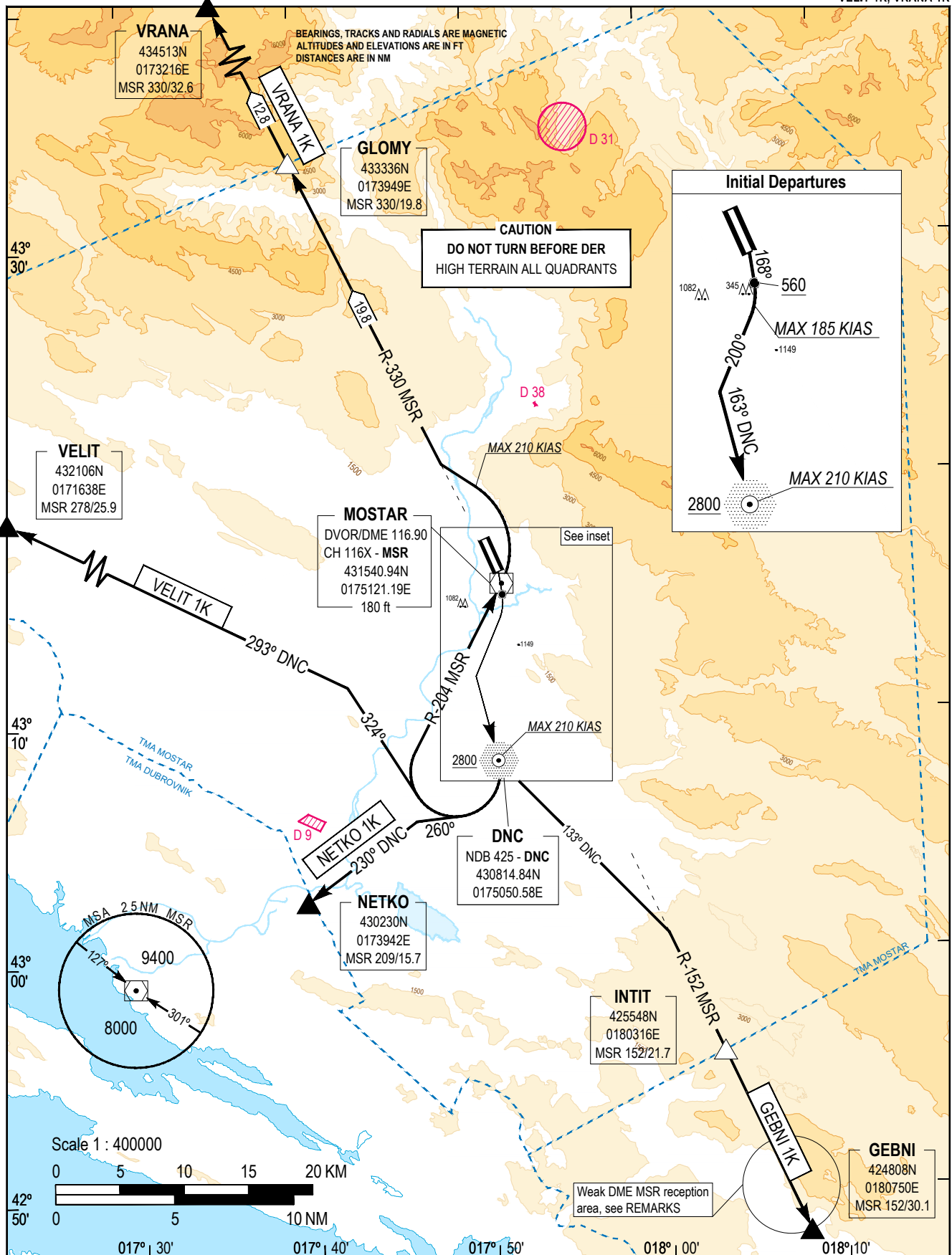
TRANSITION  
ALTITUDE  
10000 FT  
VAR 5° E (2020)

APP 120.225  
129.875  
TWR 125.550  
ATIS 126.225

**MOSTAR (LQMO)**  
**RWY15**

GEBNI 1K, NETKO 1K,  
VELIT 1K, VRANA 1K

BEARINGS, TRACKS AND RADIALS ARE MAGNETIC  
ALTITUDES AND ELEVATIONS ARE IN FT  
DISTANCES ARE IN NM



**STANDARD INSTRUMENT DEPARTURES (SID)**

**RWY15 GEBNI 1K, NETKO 1K, VELIT 1K, VRANA 1K**

SID DESIGNATOR	ROUTE DESCRIPTION	REMARKS
<b>GEBNI 1K</b>	<p><i>Climb MAG 168°. At 560 ft turn right (MAX 185 KIAS) MAG 200° to intercept and follow 163° DNC.</i></p> <p><i>Cross NDB DNC at or above 2800 ft, then turn left (MAX 210 KIAS) to intercept and follow 133° DNC to intercept and follow R-152 MSR to INTIT, then GEBNI.</i></p>	<p><i>Minimum climb gradient of 6.6% until 2800 ft.</i></p> <p><i>Do not turn before DER.</i></p> <p><i>CAUTION: Weak DME MSR reception may temporarily occur from 26 MSR to GEBNI due to Terrain. Minimum climb gradient of 6.6% recommended up to 13000 ft (or GEBNI).</i></p>
<b>NETKO 1K</b>	<p><i>Climb MAG 168°. At 560 ft turn right (MAX 185 KIAS) MAG 200° to intercept and follow 163° DNC.</i></p> <p><i>Cross NDB DNC at or above 2800 ft, then turn right (MAX 210 KIAS) MAG 260° to intercept and follow 230° DNC to NETKO.</i></p>	<p><i>Minimum climb gradient of 6.6% until 2800 ft.</i></p> <p><i>Do not turn before DER.</i></p>
<b>VELIT 1K</b>	<p><i>Climb MAG 168°. At 560 ft turn right (MAX 185 KIAS) MAG 200° to intercept and follow 163° DNC.</i></p> <p><i>Cross NDB DNC at or above 2800 ft, then turn right (MAX 210 KIAS) MAG324° to intercept and follow 293° DNC to VELIT.</i></p>	<p><i>Minimum climb gradient of 6.6% until 2800 ft.</i></p> <p><i>Do not turn before DER.</i></p>
<b>VRANA 1K</b>	<p><i>Climb MAG 168°. At 560 ft turn right (MAX 185 KIAS) MAG 200° to intercept and follow 163° DNC.</i></p> <p><i>Cross NDB DNC at or above 2800 ft, then turn right (MAX 210 KIAS) to intercept and follow R-204 MSR direct to cross DVOR/DME MSR. At DVOR/DME MSR turn left (MAX 210 KIAS) to intercept and follow R-330 MSR to GLOMY, then VRANA.</i></p>	<p><i>Minimum climb gradient of 6.6% until 2800 ft.</i></p> <p><i>Then 5.7% until 7500 ft.</i></p> <p><i>Do not turn before DER.</i></p>